



DEC DP

TMR automated silage and concentrate Mixer Feeder

- ❑ Feeds cows in both free style and tie stall barns without human intervention
- ❑ Weighs, mixes and serves TMR per cow, per group of cows
- ❑ Manages up to 8 ingredients independantly : Basic TMR ration, concentrates, grain and minerals
- ❑ Low energy consumption: electric motor 3 hp (2.2 kW) or less
- ❑ Travels on an overhead rail, adapts to feed alleys of all sizes
- ❑ Manages feed curves individually



The TMR feeder robot DEC DP is made according to the needs of each dairy operator. Some features are optional. Features, specifications and dimensions may vary without notice. Existing machines can be different.

Technical characteristics



FEATURE

Fixed 5.7 inch tactile screen (14.5 cm)

BENEFIT

- Wide display, improved readability
- Clear instructions
- Industrial display, dust and moisture resistant

Industrial PLC

- Complies to worldwide quality standards
- Long life and superior durability



Software Rovibec Generation IV

- Drives the robot to loading areas (silo, auger, conveyor)
- Automatic loading of TMR ingredients
- Up to 16 TMR recipes
- Up to 16 meals per day to 999 cows
- Feeds TMR per cow, group of cows, park
- Quantities of TMR adjusted to lactation cycle
- Automatic loading of feed supplements
- Distributes the basic TMR ration as well as the grain, supplements, minerals and concentrates, on an individual basis, to each of the cows. (According to your programming by cow, group or herd)
- Monitors the intake of each ingredient per cow
- Keeps track of remaining quantities in silos

Menu Animaux		
#	Gr	MAIS
0001	0001	0
0006	0001	0
0014	0001	8
0016	0001	8
0024	0001	3
0029	0001	6
0034	0001	8
0038	0001	6
0043	0001	8
0047	0001	2

Rovisoft software

- Seated in the comfort of your home or office, you can adjust quantities quickly and efficiently
- Allows you to manage feeding from any independent computer functioning on a Windows platform



Automatic dialer

- When an alarm is sounded, up to 4 different telephone numbers are dialled to advise you of the alarm; the numbers are dialled in the sequence you have selected and will re-dial a second time if necessary

Weigh bar sensor and electronic scale on tmr compartment

- Weighs tmr ingredients
- Controls quantity of tmr served per cow, group of cows, park
- Helps control and reduce feed costs

TMR preparation and distribution



FEATURE

BENEFIT

Dual-beater mixing mechanism

- Homogeneous mix reduces feed refusal
- Compatible with hay and straw up to 5 cm

Non-stick liner in tmr compartment

- Low friction surface, improved mixing
- Low energy use while mixing



Discharge auger
Diameter: 12 in. (30 cm)

- Improved mixing of feed supplements in tmr
- Precise serving of tmr
- Reduced sorting and refusal

Discharge conveyor
Width: 12 in. (30 cm)

- Compatible with long fiber
- High output suitable for groups of cows, parks

2-side discharge

- Distribution on each side of the robot allows operation in various configurations of alleys and barns



Distribution of feed supplement, grain, mineral



FEATURE	BENEFIT
Up to 7 compartments for feed supplements	<ul style="list-style-type: none"> - Individual serving of supplements - May help increase the value of milk components
4 different types of augers for feed supplements	<ul style="list-style-type: none"> - Discharge rate is optimized for each supplement: grain, concentrate, mineral, pellet, cube, powder
Augers operating simultaneously	<ul style="list-style-type: none"> - Short stopping time at each cow - Homogeneous mix reduces sorting and refusal
Special discharge spouts	<ul style="list-style-type: none"> - Prevent spill - Precise serving
Robust auger motor 24 VDC	<ul style="list-style-type: none"> - Accurate volumetric discharge - Quiet operation
Adjustable high level sensors	<ul style="list-style-type: none"> - Automatic loading of supplements that are used in large quantities (up to 3 sensors available)



Rail and drive



FEATURE	BENEFIT
Trolley for galvanized round rail (3.5 in. diameter) or structural I-beams	<ul style="list-style-type: none"> - Easy installation in existing barns - In a new barn, offers the flexibility to choose the most economical rail system in terms of material and labour
Direct-drive hydraulic traction wheel	<ul style="list-style-type: none"> - Power efficiency - Simple mechanical design, low maintenance
Soft traction wheel filled with polymer	<ul style="list-style-type: none"> - Maximum adherence to the surface of the rail - Allows fast traveling speed - Compatible with gradual slope (0 - 4%)
Dual traction trolleys	<ul style="list-style-type: none"> - Improve traction in hard environment (i.e. cold barn, passageway between buildings) - Compatible with steep slope rail (8% maximum)

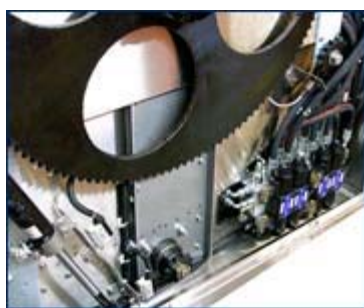


Power supply



FEATURE	BENEFIT
Battery pack 24 VDC powering a 2 hp hydraulic unit	<ul style="list-style-type: none"> - Affordable installation in small barns (60 cows or less) - Compatible with an energizer that electrifies the whole surface of the robot during feeding
Electric rail 200 - 380 VAC powering a 3 hp hydraulic unit	<ul style="list-style-type: none"> - Allows feeding up to 250 cows - Low maintenance cost (compared with batteries) - Compatible with an energizer that electrifies limited areas of the robot during feeding

Design and safety



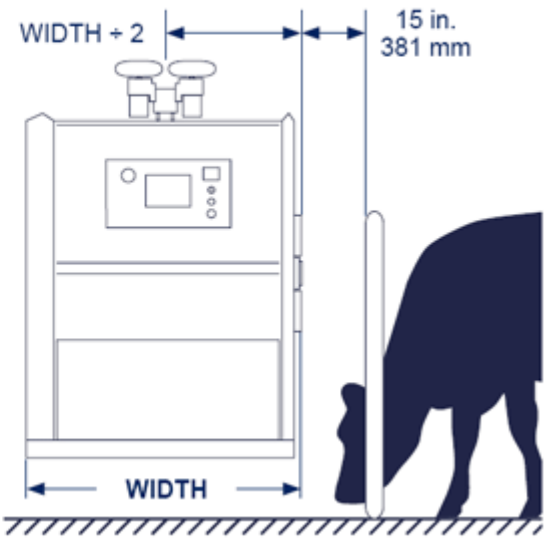
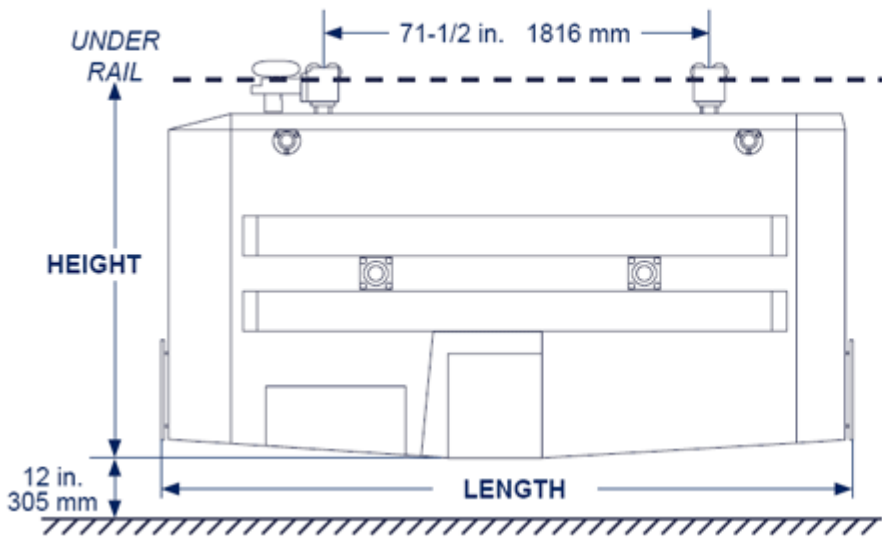
FEATURE	BENEFIT
Mixing mechanism, discharge auger (or conveyor) and trolleys driven by an industrial hydraulic unit	<ul style="list-style-type: none"> - Efficiency in hard environment (dust, moisture, corrosive feed) - Reliability and durability - Easy, low cost maintenance
Tmr compartment, ingredient compartments and exterior panels made of stainless steel	<ul style="list-style-type: none"> - Corrosion resistant - Tolerant to scratches and dents - Good appearance - Last longer than commercial steel
Riveted panels	<ul style="list-style-type: none"> - High resistance to strain - Precision assembly
Front and rear bumpers	<ul style="list-style-type: none"> - Stops the robot if an obstacle is touched
Alarm messages saved for a long period	<ul style="list-style-type: none"> - Provide useful data about situations and/or problems that may occur while feeding - Support the technician for maintenance and repair

Models and dimensions

MODEL	LENGTH in / mm	WIDTH* in / mm	HEIGHT in / mm	WEIGHT EMPTY* lbs / kg
DP1 4430	121½ / 3086	38 / 965	69 / 1753	2900 / 1315
DP2 4436	121½ / 3086	44 / 1118	69 / 1753	3000 / 1361
DP3 4442	121½ / 3086	50 / 1270	69 / 1753	3100 / 1406
DP4 4448	121½ / 3086	56 / 1422	69 / 1753	3200 / 1451
DP45 4460	121½ / 3086	63 / 1600	69 / 1753	3400 / 1542

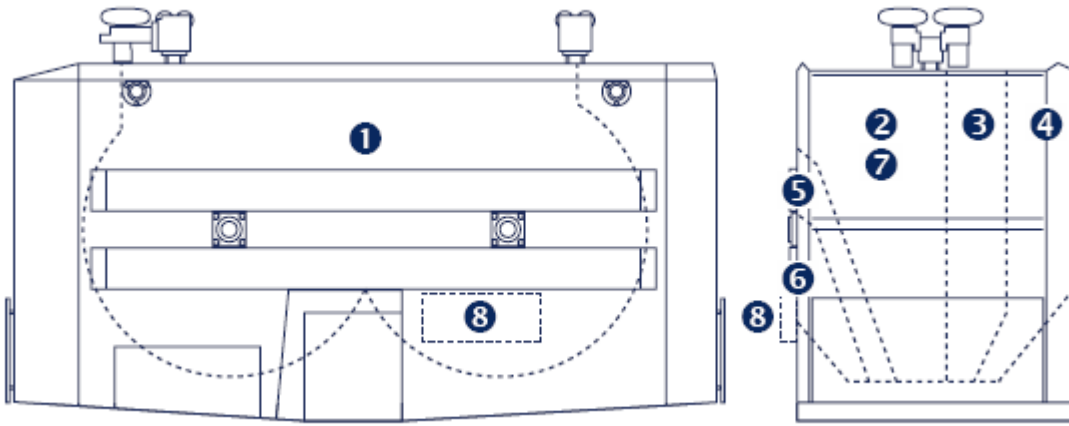
* Exterior width including guard

*Maximum weight loaded = 5000 lbs 2268 kg



Capacity

	DP1 4430	DP2 4436	DP3 4442	DP4 4448	DP45 4460
#1 - RTM ft ³ / m ³	62 / 1.75	75 / 2.11	87 / 2.45	100 / 2.83	
#2 - Grain, supplement ft ³ / L Capacity divided by 2 if compartment #7 is ordered	4.7 / 133 2.35 / 66	5.75 / 163 2.88 / 81	6.75 / 191 3.38 / 95	7.8 / 221 3.9 / 110	9.5 / 276 4.8 / 137
#3 - Grain, supplement ft ³ / L	2.6 / 74	3.2 / 91	3.75 / 106	4.3 / 122	5.5 / 152
#4 - Grain, supplement ft ³ / L	1.9 / 54	2.4 / 68	2.75 / 78	3.2 / 91	4 / 114
#5 - Mineral cube or powder ft ³ / L	0.75 / 21	1.1 / 31	1.25 / 35	1.4 / 40	1.75 / 50
#6 - Mineral cube or powder ft ³ / L	0.7 / 20	0.85 / 24	1 / 28	1.15 / 33	1.45 / 41
#7 - Grain, supplement ft ³ / L	2.35 / 66	2.88 / 81	3.38 / 95	3.9 / 110	4.8 / 137
#8 - Mineral cube or powder ft ³ / L	0.55 / 15	0.55 / 15	0.55 / 15	0.55 / 15	0.70 / 19



Minimum width of alleys - 90 degree turn

MODEL	ALLEY «A» in / mm	ALLEY «B» in / mm
DP1 4430	73 / 1854	76 / 1930
DP2 4436	76 / 1930	79 / 2007
DP3 4442	81 / 2057	84 / 2134
DP4 4448	84 / 2134	87 / 2210
DP45 4460	90 / 2286	93 / 2362

